



# Home & Land Packages



## THE ENVOY

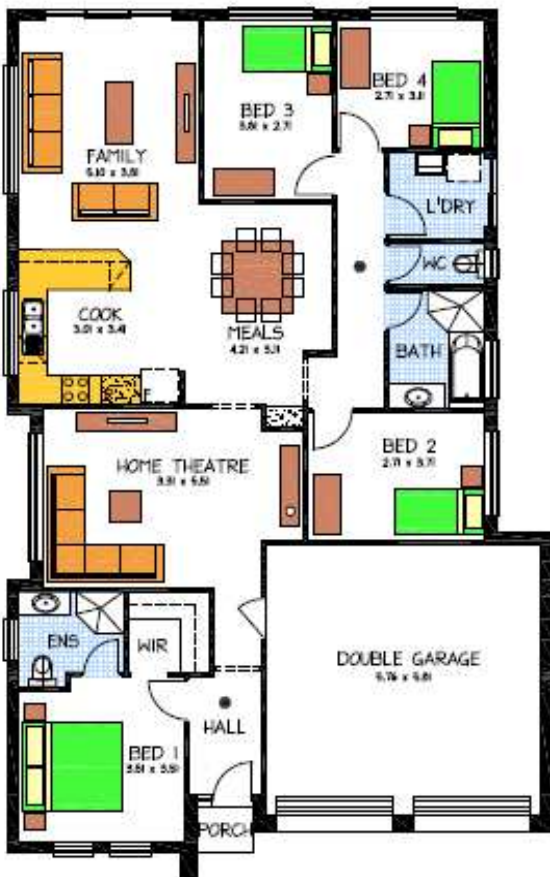
**LOT 2346 TRITON ST  
SEAFORD MEADOWS**

**This package includes:**

- 374m<sup>2</sup> of land in the popular Seaford Meadows
- Rossdale Homes Envoy courtyard built to Select Specifications
- Front elevation to be rendered and painted allowing 2 colors
- Double garage with 2 automatic roller doors and internal access
- Healthy footings allowance with all excess soil removed from site
- Reclaimed water service as per Seaford encumbrances
- NBN wiring is included for super fast internet
- Ceiling and External wall insulation
- Master bedroom with WIR and Ensuite
- Instantaneous hot water system for endless hot water
- Quality Westinghouse appliances to kitchen including retracta range-hood set in overhead cupboards
- 25 Year Structural Warranty
- 100% Absolute Fixed Price Contract with no hidden costs
- More options available, ask today for more information

**PACKAGE FROM: \$350,000**

Disclaimer: All care has been taken in the preparation of this material. No responsibility is taken for any errors or omissions. Details are subject to change without notification. Images for illustration purposes only. E&EO.



FOR THIS OFFER CALL  
**BRAD: 0421 940 398**  
P: 08 8433 2000 [www.rossdalehomes.com.au](http://www.rossdalehomes.com.au)

**R** *Because trust is a must.*  
**ROSSDALE  
HOMES**